



Lewey House

Tower block refurbishment

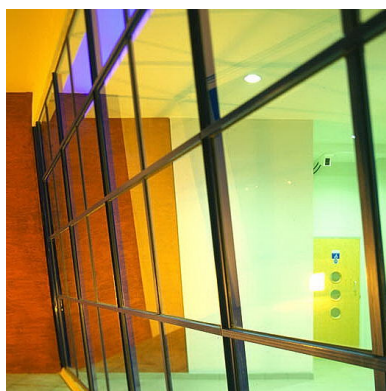
Sprunt were appointed for the refurbishment of this 22 storey tower block for North British Housing Association, following a transfer of stock from the local Council.

The tower block stands on its own in an area of traditional, low rise terraced houses. Key features of the scheme include a concierge and door entry system and extensive remodelling of the ground floor to include community facilities and a local housing office for the Association.

The refurbishment involved upgrading the sound and thermal insulation of the block and achieving mobility standards in all dwellings to meet current housing corporation standards.

The success of the project depended on achieving the earliest possible start and delivering accommodation for letting quickly. We fast-tracked the procurement of the scheme so that work started on site within a month of

our being commissioned and worked closely with the contractor so that design could be carried out in parallel with construction without affecting the quality and completion of the project.



Location:
Bow, London

Client:
North British Housing Association

Project:
96 dwellings

Value:
£3.16m

Status:
Complete 1995

“Success depended on fast track procurement and flexibility from the design and construction team.”