



Honor Oak Estate

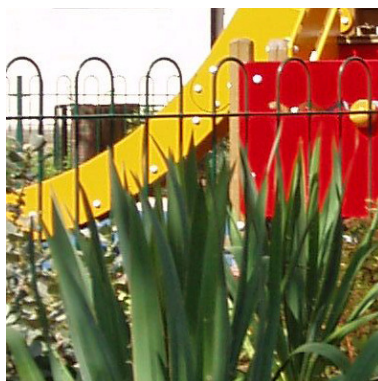
landscape

The London Borough of Lewisham commissioned Sprunt to carry out an extensive refurbishment programme on this estate with over 750 dwellings of various ages and building types. External environmental improvements made up an important component of this work to raise the quality of public and communal space around the estate.

Play facilities were an important element of the scheme, with new playgrounds for various age groups around the estate. This included small play areas for young children in secluded courtyard locations, and a larger refurbished playground catering for a range of ages. Sprunt installed new railings in front of ground floor flats to provide defensible space and improve the feeling of safety and security. Residents had the choice of a paved front area, or a low maintenance mix of new plants in front of their flats.

Sprunt identified a number of communal areas across the estate where the investment could be concentrated. This gave residents a

sense that improvements had taken place in their external environment, while not overstretching the budget over too large an area. Sprunt introduced new paving, new planting and new seating to upgrade the public realm. The team carried out consultation with local residents and other interested parties at all stages of the design process to ensure success of the project.



Location:
Brockley, London

Client:
London Borough of Lewisham

Project:
Estate Regeneration

Value:
£950,000

Status:
Complete 2006

“Sprunt identified a number of communal areas across the estate where the investment could be concentrated.”